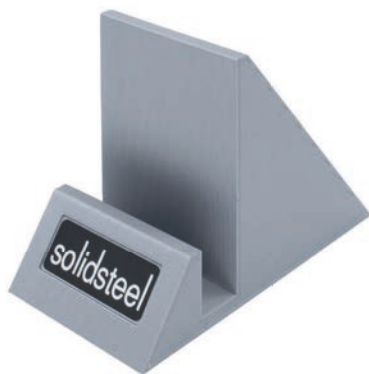


Artwork by Roger Angeles

NOWP-1

VINYL RECORD DISPLAYER



Solidsteel NOWP-1 is a **vinyl record displayer**, realized to position covers of what is listening by a turntable. It is an easy way **to show records playing** in a listening session, creating the proper vibe and share it.

Solidsteel NOWP-1 is part of the **New Solidsteel Series of Accessories** that allow to realize smart and trendy products **to satisfy the modern needs of audiophile**.

Solidsteel NOWP-1 is made by **3D Printing** using **100% renewable PLA plastic**. The vinyl record displayer is also available **in two different colors: bronze and silver**.

MOD.	DESCRIPTION	SPECS (WxDxH mm) & Weight	COLOURS
NOWP-1	Vinyl Record Displayer	55x105x75 50 gr	Bronze Silver

ZENITH

PROFESSIONAL HEADPHONES STAND

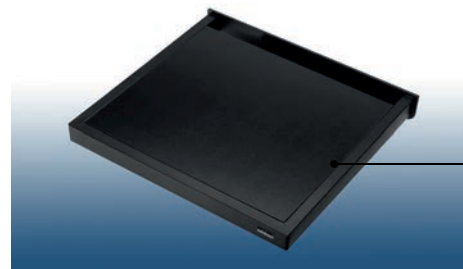


Solidsteel Zenith is an **innovative headphone stand** that guarantees **perfect stability and balance** with an **extremely low weight** with an elegant and contemporary design.

The stand allows the positioning of **any type of headset**, with the most different style and dimensions, adapting perfectly to any environment and to any surface thanks to its **non-slip rubberized silicone supports**.

Solidsteel Zenith is made by **3D Printing** using **100% renewable PLA plastic**: a great accessory meant to embellish a very personal musical space, as well as a home or professional studio recording desk.

MOD.	DESCRIPTION	SPECS (WxDxH mm) & Weight	COLOUR
Zenith	Professional Headphones Stand	80x155x200 270 gr	Silver



Adjustable Shelf



Chassis

MOD.	DESCRIPTION	Ext. SPECS (WxDxH mm)	Int. SPECS (WxDxH mm) & Weight	COLOUR
WS-5	Turntable Wall-Shelf	550x470x160/50	550x470x160/50 13 Kg	Black

The **WS-5** is a rock-solid platform delivering reference-level isolation at an attainable price, weighing in at a massive 13 Kg (28 lbs). Form follows function, the WS-5 **supports even the heaviest of turntables**. Heavy gauge steel for the perimeter and the massive wall plate are complemented by graceful ouches adding air and life to what might otherwise have been a monolithic design. Rated to handle **up to 60 Kg** (130 lbs) with a large shelf (500 x 410 x 19 mm | 19.5" x 16.25" x 0.74"), the WS-5 works with almost any table made. Ridiculously sturdy, WS-5 touts a massive (50 mm | 2") tall by (25 mm | 1") thick steel outer frame welded to an extremely thick (150 mm | 6" tall) back plate. Ditto the proprietary Duraluminum isolation cones. **Leveling of the MDF shelf** (500x410x19 mm, laminate black finish) may be fine-tuned via the **four cone cups** using an Allen key (always included). The Italian-made WS-5 can even be mounted on brick and concrete provided you employ the proper connectors.



VL-2 Black Walnut



VL-3 Black Walnut



VL-4 Black

MOD.	DESCRIPTION	Ext. SPECS (WxDxH mm)	Int. SPECS (WxDxH mm) & Weight	COLOURS
VL-2	Vinyl Storage Hi-Fi Rack	1280x410x465	480x410x325 26 Kg	Black Black Walnut
VL-3	Vinyl Storage Hi-Fi Rack	1280x410x711	480x410x325/225 37 Kg	Black Black Walnut
VL-4	Vinyl Storage Hi-Fi Rack	1280x410x958	480x410x325/225/225 51 Kg	Black Black Walnut

Our catalog is enriched **with an essential and innovative range of supports** designed to meet the most current needs of music lovers. Whether you already have a large collection of LPs, or you are just enriching it, whether you have a HI-FI system, or you are just setting it up step by step, this precious product range is a perfect solution for all ambients. By depending on various LP's dimensions, **you can storage about 120 records records per each level.** If your collection is too big, no worries: ask us for Extra-Kits able of expanding the available space.

The frame is made up of parts from our famous S Series, all the screws are galvanized, frame pillars are made of anodized aluminium, carefully filled with an absorbent phono sponge to dampen vibrations. The various metal particulars are all galvanized and finished in powder-coated for avoiding any risk of rust over time.

The VL Series is composed of MDF shelves - 1280x410 mm, with a thickness of 22 mm - finished with high quality polymeric laminates in Walnut finish. **Black is the new finish of the new collection (2022/23).**



• S2-4 Black

• S2-5 Black

MOD.	COLOUR
S2-3	Black
S2-4	Black
S2-5	Black

Stands specifically designed for essential solutions, available only with three, four or five-level configurations.

The “S2 Series” is our entry-level product range. This furniture is entirely modular and consists of shelves in **MDF wood** (580x430 mm, thickness 22 mm) in black melamine assembled on a metal frame of excellent italian quality. The tubes are in **anodized aluminium** (30 mm in diameter); the screws, the upper and lower terminals made of galvanized metal (anti-rust), subsequently powder-coated; the traditional adjustable steel spikes (M8 of thread for eventual casters, not sold and not included). **Product always include our “S Series Pads - Protective floor discs in Inox”,** for a perfect efficiency of the stand.

The article is designed to support and enhance audio components such as: turntables, digital sources - players, amplifiers, DACs, streamers, radios, signal equalizers and portable PCs (well placed on the top shelf). It is not possible to modify the heights between the shelves with any customization kit. **Available in black finish only.**

S2-3

Outer Dimensions (mm):
W 584; D 430; H 586

Inner Dimensions (mm):
W 500; D 430;
H 220/220

Total weight: 17 Kg
Shelf sustainability: 50 Kg
per each one

S2-4

Outer Dimensions (mm):
W 584; D 430; H 828

Inner Dimensions (mm):
W 500; D 430;
H 220/220/220

Total weight: 23 Kg
Shelf sustainability: 50 Kg
per each one

S2-5

Outer Dimensions (mm):
W 584; D 430; H 1070

Inner Dimensions (mm):
W 500; D 430;
H 220/220/220/220

Total weight: 28 Kg
Shelf sustainability: 50 Kg
per each one

The “S3 Series” is our reference range of Hi-Fi racks. These products are pure expression of our passion for music and, more in general, for the audiophile world.

All materials are carefully made and selected, combined for finest efficiency. **The frame and its screws are made by galvanized metal parts, varnished with powder.** Anodized aluminium for the poles, which are also filled with damping material (sound absorbing foam). On the bottom our historical spikes, in stainless steel (M8 of thread), always adjustable. **The shelves** (of dimensions 580x430 mm, with 30 mm of thickness) **are in ennobled MDF wood** finished with beautiful polymer laminate of superb quality.

The racks are all modular, each level’s height can be customized (min 145 mm and max 365 mm) and it’s possible as well to add extra shelves after the purchase.

Our “S Series Pads - Protective Floor Discs” are always included into each S3 product.

A maximum of 60 kg can be loaded for each shelf. The power amp stands can support up to 120 kg.



• S3-4 Walnut



MOD.

S Series Pads (Set of 4)	
--------------------------	--

Floor discs available as accessories as well.



• S3-2 Black

S3-2 White

MOD.	DESCRIPTION	Ext. SPECS (WxDxH mm)	Int. SPECS (WxDxH mm) & Weight	COLOURS
S3-A	Power Amp Stand	430x584x125	430x584 7 Kg	Black White Walnut
S3-B	Power Amp Stand	404x480x125	404x480 6 Kg	Black White Walnut
S3-2	High-End Rack 2 Shelves	584x430x475	500x430x325 15 Kg	Black White Walnut
S3-3	High-End Rack 3 Shelves	584x430x670	500x430x245/245 22 Kg	Black White Walnut
S3-4	High-End Rack 4 Shelves	584x430x905	500x430x245/225/225 27 Kg	Black White Walnut
S3-5	High-End Rack 5 Shelves	584x430x1065	500x430x205 on 4 levels 35 Kg	Black White Walnut

MOD.	COLOURS
S3-A	Walnut
S3-B	Walnut
S3-2	Walnut
S3-3	Walnut
S3-4	Walnut
S3-5	Walnut

MOD.	COLOURS
S3-A	Black White
S3-B	Black White
S3-2	Black White
S3-3	Black White
S3-4	Black White
S3-5	Black White



● **S4-3 White**



● **S4-4 Black**

MOD.	DESCRIPTION	Ext. SPECS (WxDxH mm)	Int. SPECS (WxDxH mm) & Weight	COLOURS
S4-2	Hi-Fi AV Rack 2 Shelves	1114x430x475	500x430x325 26 Kg	Black White
S4-3	Hi-Fi AV Rack 3 Shelves	1114x430x670	500x430x245/245 37 Kg	Black White
S4-4	Hi-Fi AV Rack 4 Shelves	1114x430x905	500x430x245/225/225 51 Kg	Black White

The “S4 Series” is the alternative wide version of our traditional range of furniture for Hi-Fi and AV components.

Ideal as well for TVs within 49” of width. The inner shelves proportions are the same adopted for the S3 Series racks.

All the materials are carefully made and selected, exclusively of italian origin. **The frame is made by galvanized metal parts**, varnished with powder, with screws and anodized aluminium poles filled with damping material (sound absorbing foam). The bottom spikes are our historical adjustable Inox tips (M8 of thread).

The shelves (of dimensions 1114x430 mm, with 30 mm of thickness) **are in ennobled MDF wood** finished with beautiful polymer laminate of high quality.

Since the racks are all modular, each level’s height can be customized (min 145 mm and max 365 mm) and it’s possible as well to add extra shelves after the first purchase.

Our “S Series Pads - Protective Floor Discs” are always included into each S4 product.



• S5-2 Black



• S5-3 White



• S5-4 Black



• S5-5 Silver-Black

MOD.	DESCRIPTION	Ext. SPECS (WxDxH mm)	Int. SPECS (WxDxH mm) & Weight	COLOURS
S5-2	Hi-Fi Rack 2 Shelves	584x430x500	500x430x305 24 Kg	Black White Silver-Black (30th Anniversary)
S5-3	Hi-Fi Rack 3 Shelves	584x430x755	500x430x305/205 30 Kg	Black White Silver-Black (30th Anniversary)
S5-4	Hi-Fi Rack 4 Shelves	584x430x1010	500x430x305/205/205 37 Kg	Black White Silver-Black (30th Anniversary)
S5-5	Hi-Fi Rack 5 Shelves	584x430x1085	500x430x185 on 4 level 47 Kg	Black White Silver-Black (30th Anniversary)

Adjustable X Plate



SPECS (WxDxH): 450x405x19 mm

The “S5 Series” is the **most advanced line** our “S Series” range of traditional audio furniture.

These racks are technically featured by their **double-adjustable-shelf system**: the lower (called “X Plates”) are positioned on the larger thanks to 4 aluminium cones per each level. Once regulated, every shelf is able of damping vibrations at its best thanks to our engineered system. **Highly recommended for turntable and tube amplifiers owners.**

The frame is made by galvanized metal parts, varnished with powder, with screws and anodized aluminium poles filled with damping material (sound absorbing foam). On the bottom there are our iconic adjustable Inox spikes (M8 of Thread).

The shelves (main: 584x430 mm, with 30 mm of thickness; “X Plate”: 405x405, with 19 mm of thickness) are in **ennobled MDF wood** finished with beautiful polymer of high quality.

Since the racks are all modular, each level’s height can be customized (min 145 mm and max 345 mm) and it’s possible as well to add extra shelves after the purchase.

Our “S Series Pads - Protective Floor Discs” are always included into each S5 product.



NS SERIES



NS-10 NS-7 NS-6

SS SERIES



SS-5 SS-6 SS-7

MOD.	DESCRIPTION	Ext. SPECS (WxDxH mm) & Weight	COLOUR
NS-4	Pair of Bookshelf Speaker Stands Top Plates of 160x160 mm	230x280x425 8 Kg	Black
NS-6	Pair of Bookshelf Speaker Stands Top Plates of 160x160 mm	230x280x625 10 Kg	Black
NS-7	Pair of Bookshelf Speaker Stands Top Plates of 160x160 mm	230x280x725 11 Kg	Black
NS-10	Pair of Bookshelf Speaker Stands Top Plates of 160x160 mm	230x280x1020 14 Kg	Black

MOD.	DESCRIPTION	Ext. SPECS (WxDxH mm) & Weight	COLOURS
SS-5	Pair of Bookshelf Speaker Stands Top Plates of 190x190 mm	330x310x525 11 Kg	Black White Raw
SS-6	Pair of Bookshelf Speaker Stands Top Plates of 160x160 mm	330x310x625 12 Kg	Black White Raw
SS-7	Pair of Bookshelf Speaker Stands Top Plates of 160x160 mm	330x310x725 13 Kg	Black White Raw
SS Top Plates	Pair of Top Plates of 190x190 mm made in laquered wood		Black

MOD.	DESCRIPTION	Ext. SPECS (WxDxH mm)	Int. SPECS (WxDxH mm) & Weight	COLOUR
HY-A	Power Amp Stand	404x600x130	404x600 8 Kg	Flat Black
HY-B	Power Amp Stand	404x480x130	404x480 7 Kg	Flat Black
HY-C	Power Amp Stand	500x600x130	500x600 9 Kg	Flat Black
HY-2	High-End Rack 2 Shelves	600x500x445	508x500x285 28 Kg	Flat Black
HY-3	High-End Rack 3 Shelves	600x500x660	508x500x285/185 42 Kg	Flat Black
HY-4	High-End Rack 4 Shelves	600x500x875	508x500x285/185/185 60 Kg	Flat Black
HY-LC	Power Amp Stand	500x780x130	780x500 12 Kg	Flat Black
HY-2L	High-End Rack 2 Shelves	780x500x445	508x500x285 33 Kg	Flat Black
HY-3L	High-End Rack 3 Shelves	780x500x660	508x500x285/185 50 Kg	Flat Black
HY-4L	High-End Rack 4 Shelves	780x500x875	508x500x285/185/185 67 Kg	Flat Black

The “HY Series” is our regular **Hyperspike range** with a four-pillar stainless steel frame configuration. Since their launch in 2018, these **High-End racks** became popular in a few months and are the ideal choice for those who aim for an excellent stand with capacious shelves, heavy hardware parts and awesome finishes at an affordable price.

The frame is exclusively made by stainless steel Inox parts (40 mm of diameter) turned from full. The bottom parts are equipped by our traditional **adjustable Inox spikes** (M8 of thread).

The shelves (dimensions of 600x500 mm for the “Standard” version; 780x500 for the “Large” one; 30 mm of thickness) are in **MDF ennobled wood**, lacquered in a beautiful flat black finish.

Since the racks are all modular, **each level’s height can be customized** (min 145 mm and max 325 mm) and it’s possible as well to add extra shelves after the purchase.



•HY-4 Flat Black



•HY-A Flat Black



•HY Bottom Spikes

MOD.	DESCRIPTION	Ext. SPECS (WxDxH mm)	Int. SPECS (WxDxH mm) & Weight	COLOURS
HF-A	Power Amp Stand	404x600x165	404x600 8 Kg	Flat Black Gloss Black Gloss White
HF-B	Power Amp Stand	404x480x165	404x480 7 Kg	Flat Black Gloss Black Gloss White
HF-C	Power Amp Stand	645x561x165	645x561 11 Kg	Flat Black Gloss Black Gloss White
HF-2	High-End Rack 2 Shelves	645x561x540	645x561x305 34 Kg	Flat Black Gloss Black Gloss White
HF-3	High-End Rack 3 Shelves	645x561x775	645x561x305/205 48 Kg	Flat Black Gloss Black Gloss White
HF-4	High-End Rack 4 Shelves	645x561x1010	645x561x305/205/205 66 Kg	Flat Black Gloss Black Gloss White
HF-5	High-End Rack 5 Shelves	645x561x1245	645x561x305/205/ 205/205 82 kg	Flat Black Gloss Black Gloss White

The “**HF Series**” is our r is our famous and **historical Hyperspike line** with a four-pillar frame made of full stainless steel parts.

Introduced for the first time in the audio market in 2006, it is certainly an iconic symbol of our finest production.

These incredible **High-End racks** are a guarantee for audio systems: a rock-solid stand of exceptional value with a design carved over time, of unquestionable italianan charm.

The frame is esclusively made by **stainless steel Inox parts** (40 mm of diameter) turned from full. The bottom parts are equipped by **our hystorical Hyperspikes**. The shelves (dimensions of 645x561 mm, 30 mm of thickness) are in **MDF ennobled wood**, lacquered in three different beautiful finishes: flat back, gross black and gloss white. The glossy finishes are very resistant against scratches. Since the racks are all modular, **each level's height can be customized** (min 145 mm and max 365 mm) and it's possible as well to add extra shelves after the purchase.



• **HF Traditional Hyperspike**



• **HF-3 Gloss White**



• **HF-4 Flat Black**



American Natural Walnut



Indian Rosewood



Indonesian Ebony Macassar

MOD.	DESCRIPTION	Ext. SPECS (WxDxH mm)	Int. SPECS (WxDxH mm) & Weight	COLOURS
HF-2	High-End Rack 2 Shelves	645x561x540	645x561x305 34 Kg	Natural Walnut Indian Rosewood Ebony Macassar
HF-3	High-End Rack 3 Shelves	645x561x775	645x561x305/205 48 Kg	Natural Walnut Indian Rosewood Ebony Macassar
HF-4	High-End Rack 4 Shelves	645x561x1010	645x561x305/205/205 66 Kg	Natural Walnut Indian Rosewood Ebony Macassar

The “**HF Élite Series**” is a **premium range upgrade** designed for enriching High- End audio systems.

A **Top Class rack** with **veener wood shelves** in three beautiful finishes: **American Natural Walnut, Indian rosewood and Indonesian Ebony Macassar** (with a gloss transparent varnish for an extra luxury effect).

The frame parts of these stands are the same adopted for the **HF Series Models**.

Timber is a traditional material able of being valued in every ambient, whatever a living room, a music or studio room you choose as listening space.

Our aim is always to make products able of lasting in time, with beautiful look and design

MOD.	DESCRIPTION	Ext. SPECS (WxDxH mm)	Int. SPECS (WxDxH mm) & Weight	COLOURS
HW-2	AV Rack 2 Shelves	1090x410x244	998x410x244 40 Kg	Flat Black Gloss Black Gloss White
HW-3	AV Rack 3 Shelves	1090x410x620	998x410x224/224 50 Kg	Flat Black Gloss Black Gloss White
HW-2L	AV Rack 2 Shelves	1280x410x386	1186x410x244 48 Kg	Flat Black Gloss Black Gloss White
HW-3L	AV Rack 3 Shelves	1280x410x620	1186x410x224/224 74 Kg	Flat Black Gloss Black Gloss White

The “HW Series” is our top **historical Hyperspike range** for what concerns the **AV furniture** in our catalogue.

The simplicity of its design is based on the elegance and refinement of its lines. A rack capable of being placed perfectly in any space, wheter it is a modern home or a more classic environment. It is no coincidence that it is the product most requested by architects and interior designers within our catalog.

Ideal for TVs up to 49” in size, there is also compatibility with some 55” models for the “Large” version.

The frame is made by stainless steel hardware parts from our Hyperspike range and under request it is also possible to customize it with spikes for increasing the technical level for the High-End components.

The shelves (dimensions of 1090x410 mm for the “Standard” version; 1280x410 for the “Large” one; 30 mm of thickness) are in **MDF ennobled wood**, lacquared in **three finishes: Flat Black, Gloss Black and Gloss White**.

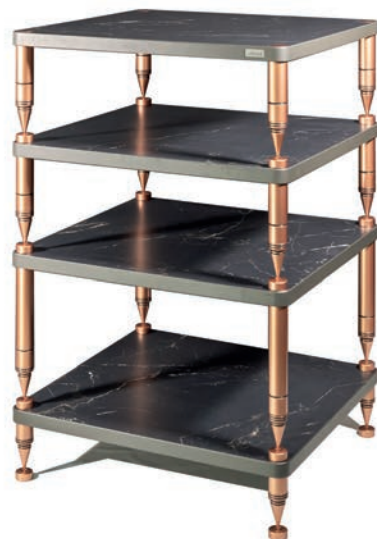
Since the racks are all modular, **each level’s height can be customized** (min 145 mm and max 245 mm without spikes; min 145 and max 345 mm with HY/HF Spikes) and it’s possible as well to add extra shelves after the first purchase.



• HW-3 Flat Black



• HW-2 Gloss White



HP-4 Calacatta White

HP-4 Atlantic Black

MOD.	DESCRIPTION	Ext. SPECS (WxDxH mm)	Int. SPECS (WxDxH mm) & Weight	COLOURS
HP-A	Power Amp Stand	620x660x160	620x660 9 Kg	Calacatta White Atlantic Black
HP-2	High-End Rack 2 Shelves	660x620x505	526x620x315 32 Kg	Calacatta White Atlantic Black
HP-3	High-End Rack 3 Shelves	660x620x750	526x620x315/215 48 Kg	Calacatta White Atlantic Black
HP-4	High-End Rack 4 Shelves	660x620x995	526x620x315/215/215 70 Kg	Calacatta White Atlantic Black

Dear Customer,

Searching for the best possible product, the **HP Series** contains the maximum level of Solidsteel Research **in terms of materials and technology of the Hyperspike range.**

The new **HP Series** substitutes the highly appreciated past series **with an upgrade in terms of materials and technical aspects**, following its traditional **100% Made in Italy** manufacturing process.

The new **HP Series** is capable of accommodating the widest and heaviest audio components, giving a **no-compromises sound quality and stability.**

The **shelves** - available in **Calacatta White** or **Atlantic Black** - are made by **ceramic slabs** installed on a **resin layer filled with polyurethane foam** (medium/high density). Each shelf is capable of sustaining **120 kg** (tested).

The **Hyperspike hardware parts** are **Made in Inox** (stainless steel) liquid painted **in two different exclusive colors: copper and brass.**

Little rubber discs - made by **3D printing** and **100% recyclable** - are separating each spike on every level **for the best dampening of vibrations.**

The new **HP Series** is **completely modular** as the other Solidsteel lines of racks.

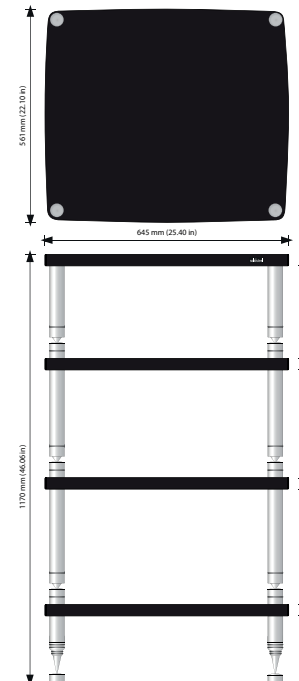
Solidsteel

**HFW-3XL [305/305]
HYPERSPIKE AV RACK**



MOD.	DESCRIPTION	Ext. SPECS (WxDxH mm)	Int. SPECS (WxDxH mm) & Weight	COLOURS
HFW 3XL	AV Rack 3 Shelves	1500x530x845	684x530x305/305 90 Kg	Flat Black Gloss Black Gloss White

**HF-4 COLOSSUS SPECIAL
HYPERSPIKE HIGH-END AUDIO RACK**



**SCALE 1:20
GLOSS BLACK**

MOD.	DESCRIPTION	Ext. SPECS (WxDxH mm)	Int. SPECS (WxDxH mm) & Weight	COLOURS
HF-4 Colossus	High-End Rack 4 Shelves	645x561x1170	645x561/345/285/245 90 Kg	Flat Black Gloss Black Gloss White

RETAIL PRICE LIST | EUROPE 2024/25

PRODUCT	FINISH	Retail (NO VAT)	LU (17%)	MT (18%)	CY, DE, RO (19%)	AT, BG, FR, SK (20%)	BE, CZ, LV, LT, NL, ES (21%)	EE, IT, SI (22%)	IE, PL, PT (23%)	FI, GR, IS (24%)	HR, DK, NO, SE (25%)	HU (27%)
Choose your Country and find your European Retail Price (VAT included) - email to: customers@solidsteel.it												
Zenith	Silver	52,00 €	60,84 €	61,36 €	61,88 €	62,40 €	62,92 €	63,44 €	63,96 €	64,48 €	65,00 €	66,04 €
NOWP-1	Silver/Bronze	11,00 €	12,87 €	12,98 €	13,09 €	13,20 €	13,31 €	13,42 €	13,53 €	13,64 €	13,75 €	13,97 €
WS-5	Black	387,00 €	452,79 €	456,66 €	460,53 €	464,40 €	468,27 €	472,14 €	476,01 €	479,88 €	483,75 €	491,49 €
VL-2	Black/Walnut	585,00 €	684,45 €	690,30 €	696,15 €	702,00 €	707,85 €	713,70 €	719,55 €	725,40 €	731,25 €	742,95 €
VL-3	Black/Walnut	818,00 €	957,06 €	965,24 €	973,42 €	981,60 €	989,78 €	997,96 €	1.006,14 €	1.014,32 €	1.022,50 €	1.038,86 €
VL-4	Black/Walnut	1.033,00 €	1.208,61 €	1.218,94 €	1.229,27 €	1.239,60 €	1.249,93 €	1.260,26 €	1.270,59 €	1.280,92 €	1.291,25 €	1.311,91 €
S2-3	Black	293,00 €	342,81 €	345,74 €	348,67 €	351,60 €	354,53 €	357,46 €	360,39 €	363,32 €	366,25 €	372,11 €
S2-4	Black	344,00 €	402,48 €	405,92 €	409,36 €	412,80 €	416,24 €	419,68 €	423,12 €	426,56 €	430,00 €	436,88 €
S2-5	Black	396,00 €	463,32 €	467,28 €	471,24 €	475,20 €	479,16 €	483,12 €	487,08 €	491,04 €	495,00 €	502,92 €
S3-A	Black/White	198,00 €	231,66 €	233,64 €	235,62 €	237,60 €	239,58 €	241,56 €	243,54 €	245,52 €	247,50 €	251,46 €
S3-B	Black/White	189,00 €	221,13 €	223,02 €	224,91 €	226,80 €	228,69 €	230,58 €	232,47 €	234,36 €	236,25 €	240,03 €
S3-2	Black/White	301,00 €	352,17 €	355,18 €	358,19 €	361,20 €	364,21 €	367,22 €	370,23 €	373,24 €	376,25 €	382,27 €
S3-3	Black/White	426,00 €	498,42 €	502,68 €	506,94 €	511,20 €	515,46 €	519,72 €	523,98 €	528,24 €	532,50 €	541,02 €
S3-4	Black/White	559,00 €	654,03 €	659,62 €	665,21 €	670,80 €	676,39 €	681,98 €	687,57 €	693,16 €	698,75 €	709,93 €
S3-5	Black/White	689,00 €	806,13 €	813,02 €	819,91 €	826,80 €	833,69 €	840,58 €	847,47 €	854,36 €	861,25 €	875,03 €
S3-A	Walnut	224,00 €	262,08 €	264,32 €	266,56 €	268,80 €	271,04 €	273,28 €	275,52 €	277,76 €	280,00 €	284,48 €
S3-B	Walnut	215,00 €	251,55 €	253,70 €	255,85 €	258,00 €	260,15 €	262,30 €	264,45 €	266,60 €	268,75 €	273,05 €
S3-2	Walnut	327,00 €	382,59 €	385,86 €	389,13 €	392,40 €	395,67 €	398,94 €	402,21 €	405,48 €	408,75 €	415,29 €
S3-3	Walnut	473,00 €	553,41 €	558,14 €	562,87 €	567,60 €	572,33 €	577,06 €	581,79 €	586,52 €	591,25 €	600,71 €
S3-4	Walnut	658,00 €	769,86 €	776,44 €	783,02 €	789,60 €	796,18 €	802,76 €	809,34 €	815,92 €	822,50 €	835,66 €
S3-5	Walnut	775,00 €	906,75 €	914,50 €	922,25 €	930,00 €	937,75 €	945,50 €	953,25 €	961,00 €	968,75 €	984,25 €

RETAIL PRICE LIST | EUROPE 2024/25

PRODUCT	FINISH	Retail (NO VAT)	LU (17%)	MT (18%)	CY, DE, RO (19%)	AT, BG, FR, SK (20%)	BE, CZ, LV, LT, NL, ES (21%)	EE, IT, SI (22%)	IE, PL, PT (23%)	FI, GR, IS (24%)	HR, DK, NO, SE (25%)	HU (27%)
Choose your Country and find your European Retail Price (VAT included) - email to: customers@solidsteel.it												
S4-2	<i>Black/White</i>	534,00 €	624,78 €	630,12 €	635,46 €	640,80 €	646,14 €	651,48 €	656,82 €	662,16 €	667,50 €	678,18 €
S4-3	<i>Black/White</i>	766,00 €	896,22 €	903,88 €	911,54 €	919,20 €	926,86 €	934,52 €	942,18 €	949,84 €	957,50 €	972,82 €
S4-4	<i>Black/White</i>	990,00 €	1.158,30 €	1.168,20 €	1.178,10 €	1.188,00 €	1.197,90 €	1.207,80 €	1.217,70 €	1.227,60 €	1.237,50 €	1.257,30 €
S5-2	<i>Black/White/Silver</i>	430,00 €	503,10 €	507,40 €	511,70 €	516,00 €	520,30 €	524,60 €	528,90 €	533,20 €	537,50 €	546,10 €
S5-3	<i>Black/White/Silver</i>	628,00 €	734,76 €	741,04 €	747,32 €	753,60 €	759,88 €	766,16 €	772,44 €	778,72 €	785,00 €	797,56 €
S5-4	<i>Black/White/Silver</i>	818,00 €	957,06 €	965,24 €	973,42 €	981,60 €	989,78 €	997,96 €	1.006,14 €	1.014,32 €	1.022,50 €	1.038,86 €
S5-5	<i>Black/White/Silver</i>	1.016,00 €	1.188,72 €	1.198,88 €	1.209,04 €	1.219,20 €	1.229,36 €	1.239,52 €	1.249,68 €	1.259,84 €	1.270,00 €	1.290,32 €
NS-4	<i>Black</i>	236,00 €	276,12 €	278,48 €	280,84 €	283,20 €	285,56 €	287,92 €	290,28 €	292,64 €	295,00 €	299,72 €
NS-6	<i>Black</i>	250,00 €	292,50 €	295,00 €	297,50 €	300,00 €	302,50 €	305,00 €	307,50 €	310,00 €	312,50 €	317,50 €
NS-7	<i>Black</i>	267,00 €	312,39 €	315,06 €	317,73 €	320,40 €	323,07 €	325,74 €	328,41 €	331,08 €	333,75 €	339,09 €
NS-10	<i>Black</i>	336,00 €	393,12 €	396,48 €	399,84 €	403,20 €	406,56 €	409,92 €	413,28 €	416,64 €	420,00 €	426,72 €
SS-5	<i>Black/White/Raw</i>	404,00 €	472,68 €	476,72 €	480,76 €	484,80 €	488,84 €	492,88 €	496,92 €	500,96 €	505,00 €	513,08 €
SS-6	<i>Black/White/Raw</i>	413,00 €	483,21 €	487,34 €	491,47 €	495,60 €	499,73 €	503,86 €	507,99 €	512,12 €	516,25 €	524,51 €
SS-7	<i>Black/White/Raw</i>	430,00 €	503,10 €	507,40 €	511,70 €	516,00 €	520,30 €	524,60 €	528,90 €	533,20 €	537,50 €	546,10 €
HY-A	<i>Black</i>	379,00 €	443,43 €	447,22 €	451,01 €	454,80 €	458,59 €	462,38 €	466,17 €	469,96 €	473,75 €	481,33 €
HY-B	<i>Black</i>	374,00 €	437,58 €	441,32 €	445,06 €	448,80 €	452,54 €	456,28 €	460,02 €	463,76 €	467,50 €	474,98 €
HY-C	<i>Black</i>	431,00 €	504,27 €	508,58 €	512,89 €	517,20 €	521,51 €	525,82 €	530,13 €	534,44 €	538,75 €	547,37 €
HY-LC	<i>Black</i>	480,00 €	561,60 €	566,40 €	571,20 €	576,00 €	580,80 €	585,60 €	590,40 €	595,20 €	600,00 €	609,60 €
HY-2	<i>Black</i>	947,00 €	1.107,99 €	1.117,46 €	1.126,93 €	1.136,40 €	1.145,87 €	1.155,34 €	1.164,81 €	1.174,28 €	1.183,75 €	1.202,69 €
HY-3	<i>Black</i>	1.442,00 €	1.687,14 €	1.701,56 €	1.715,98 €	1.730,40 €	1.744,82 €	1.759,24 €	1.773,66 €	1.788,08 €	1.802,50 €	1.831,34 €

PRODUCT	FINISH	Retail (NO VAT)	LU (17%)	MT (18%)	CY, DE, RO (19%)	AT, BG, FR, SK (20%)	BE, CZ, LV, LT, NL, ES (21%)	EE, IT, SI (22%)	IE, PL, PT (23%)	FI, GR, IS (24%)	HR, DK, NO, SE (25%)	HU (27%)
Choose your Country and find your European Retail Price (VAT included) - email to: customers@solidsteel.it												
HY-4	<i>Black</i>	1.872,00 €	2.190,24 €	2.208,96 €	2.227,68 €	2.246,40 €	2.265,12 €	2.283,84 €	2.302,56 €	2.321,28 €	2.340,00 €	2.377,44 €
HY-2L	<i>Black</i>	1.162,00 €	1.359,54 €	1.371,16 €	1.382,78 €	1.394,40 €	1.406,02 €	1.417,64 €	1.429,26 €	1.440,88 €	1.452,50 €	1.475,74 €
HY-3L	<i>Black</i>	1.764,00 €	2.063,88 €	2.081,52 €	2.099,16 €	2.116,80 €	2.134,44 €	2.152,08 €	2.169,72 €	2.187,36 €	2.205,00 €	2.240,28 €
HY-4L	<i>Black</i>	2.281,00 €	2.668,77 €	2.691,58 €	2.714,39 €	2.737,20 €	2.760,01 €	2.782,82 €	2.805,63 €	2.828,44 €	2.851,25 €	2.896,87 €
HF-A	<i>Flat & Gloss Black/White</i>	508,00 €	594,36 €	599,44 €	604,52 €	609,60 €	614,68 €	619,76 €	624,84 €	629,92 €	635,00 €	645,16 €
HF-B	<i>Flat & Gloss Black/White</i>	499,00 €	583,83 €	588,82 €	593,81 €	598,80 €	603,79 €	608,78 €	613,77 €	618,76 €	623,75 €	633,73 €
HF-C	<i>Flat & Gloss Black/White</i>	696,00 €	814,32 €	821,28 €	828,24 €	835,20 €	842,16 €	849,12 €	856,08 €	863,04 €	870,00 €	883,92 €
HF-2	<i>Flat & Gloss Black/White</i>	1.282,00 €	1.499,94 €	1.512,76 €	1.525,58 €	1.538,40 €	1.551,22 €	1.564,04 €	1.576,86 €	1.589,68 €	1.602,50 €	1.628,14 €
HF-3	<i>Flat & Gloss Black/White</i>	1.850,00 €	2.164,50 €	2.183,00 €	2.201,50 €	2.220,00 €	2.238,50 €	2.257,00 €	2.275,50 €	2.294,00 €	2.312,50 €	2.349,50 €
HF-4	<i>Flat & Gloss Black/White</i>	2.496,00 €	2.920,32 €	2.945,28 €	2.970,24 €	2.995,20 €	3.020,16 €	3.045,12 €	3.070,08 €	3.095,04 €	3.120,00 €	3.169,92 €
HF-5	<i>Flat & Gloss Black/White</i>	3.184,00 €	3.725,28 €	3.757,12 €	3.788,96 €	3.820,80 €	3.852,64 €	3.884,48 €	3.916,32 €	3.948,16 €	3.980,00 €	4.043,68 €
HF-2	<i>Walnut/Rosewood/Macassar</i>	1.721,00 €	2.013,57 €	2.030,78 €	2.047,99 €	2.065,20 €	2.082,41 €	2.099,62 €	2.116,83 €	2.134,04 €	2.151,25 €	2.185,67 €
HF-3	<i>Walnut/Rosewood/Macassar</i>	2.496,00 €	2.920,32 €	2.945,28 €	2.970,24 €	2.995,20 €	3.020,16 €	3.045,12 €	3.070,08 €	3.095,04 €	3.120,00 €	3.169,92 €
HF-4	<i>Walnut/Rosewood/Macassar</i>	3.270,00 €	3.825,90 €	3.858,60 €	3.891,30 €	3.924,00 €	3.956,70 €	3.989,40 €	4.022,10 €	4.054,80 €	4.087,50 €	4.152,90 €
HW-2	<i>Flat & Gloss Black/White</i>	1.102,00 €	1.289,34 €	1.300,36 €	1.311,38 €	1.322,40 €	1.333,42 €	1.344,44 €	1.355,46 €	1.366,48 €	1.377,50 €	1.399,54 €
HW-2L	<i>Flat & Gloss Black/White</i>	1.179,00 €	1.379,43 €	1.391,22 €	1.403,01 €	1.414,80 €	1.426,59 €	1.438,38 €	1.450,17 €	1.461,96 €	1.473,75 €	1.497,33 €
HW-3	<i>Flat & Gloss Black/White</i>	1.657,00 €	1.938,69 €	1.955,26 €	1.971,83 €	1.988,40 €	2.004,97 €	2.021,54 €	2.038,11 €	2.054,68 €	2.071,25 €	2.104,39 €
HW-3L	<i>Flat & Gloss Black/White</i>	1.751,00 €	2.048,67 €	2.066,18 €	2.083,69 €	2.101,20 €	2.118,71 €	2.136,22 €	2.153,73 €	2.171,24 €	2.188,75 €	2.223,77 €

PRODUCT	FINISH	Retail (NO VAT)	LU (17%)	MT (18%)	CY, DE, RO (19%)	AT, BG, FR, SK (20%)	BE, CZ, LV, LT, NL, ES (21%)	EE, IT, SI (22%)	IE, PL, PT (23%)	FI, GR, IS (24%)	HR, DK, NO, SE (25%)	HU (27%)
HP-A	<i>Calacatta White/Atlantic Black</i>	2.471,00 €	2.891,07 €	2.915,78 €	2.940,49 €	2.965,20 €	2.989,91 €	3.014,62 €	3.039,33 €	3.064,04 €	3.088,75 €	3.138,17 €
HP-2	<i>Calacatta White/Atlantic Black</i>	4.887,00 €	5.717,79 €	5.766,66 €	5.815,53 €	5.864,40 €	5.913,27 €	5.962,14 €	6.011,01 €	6.059,88 €	6.108,75 €	6.206,49 €
HP-3	<i>Calacatta White/Atlantic Black</i>	7.603,00 €	8.895,51 €	8.971,54 €	9.047,57 €	9.123,60 €	9.199,63 €	9.275,66 €	9.351,69 €	9.427,72 €	9.503,75 €	9.655,81 €
HP-4	<i>Calacatta White/Atlantic Black</i>	10.019,00 €	11.722,23 €	11.822,42 €	11.922,61 €	12.022,80 €	12.122,99 €	12.223,18 €	12.323,37 €	12.423,56 €	12.523,75 €	12.724,13 €
HF-3XL	<i>Flat & Gloss Black/White</i>	3.786,00 €	4.429,62 €	4.467,48 €	4.505,34 €	4.543,20 €	4.581,06 €	4.618,92 €	4.656,78 €	4.694,64 €	4.732,50 €	4.808,22 €
HF-4 Colossus	<i>Flat & Gloss Black/White</i>	2.496,00 €	2.920,32 €	2.945,28 €	2.970,24 €	2.995,20 €	3.020,16 €	3.045,12 €	3.070,08 €	3.095,04 €	3.120,00 €	3.169,92 €
Choose your Country and find your European Retail Price (VAT included) - email to: customers@solidsteel.it												



CO-FOUNDERS OF



PARTNERS OF

